



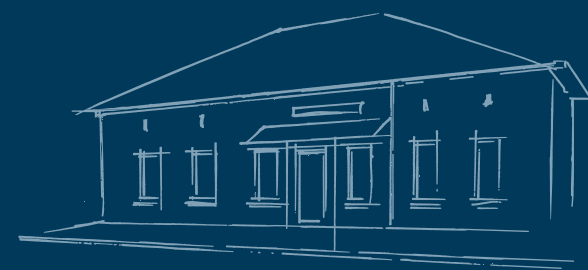
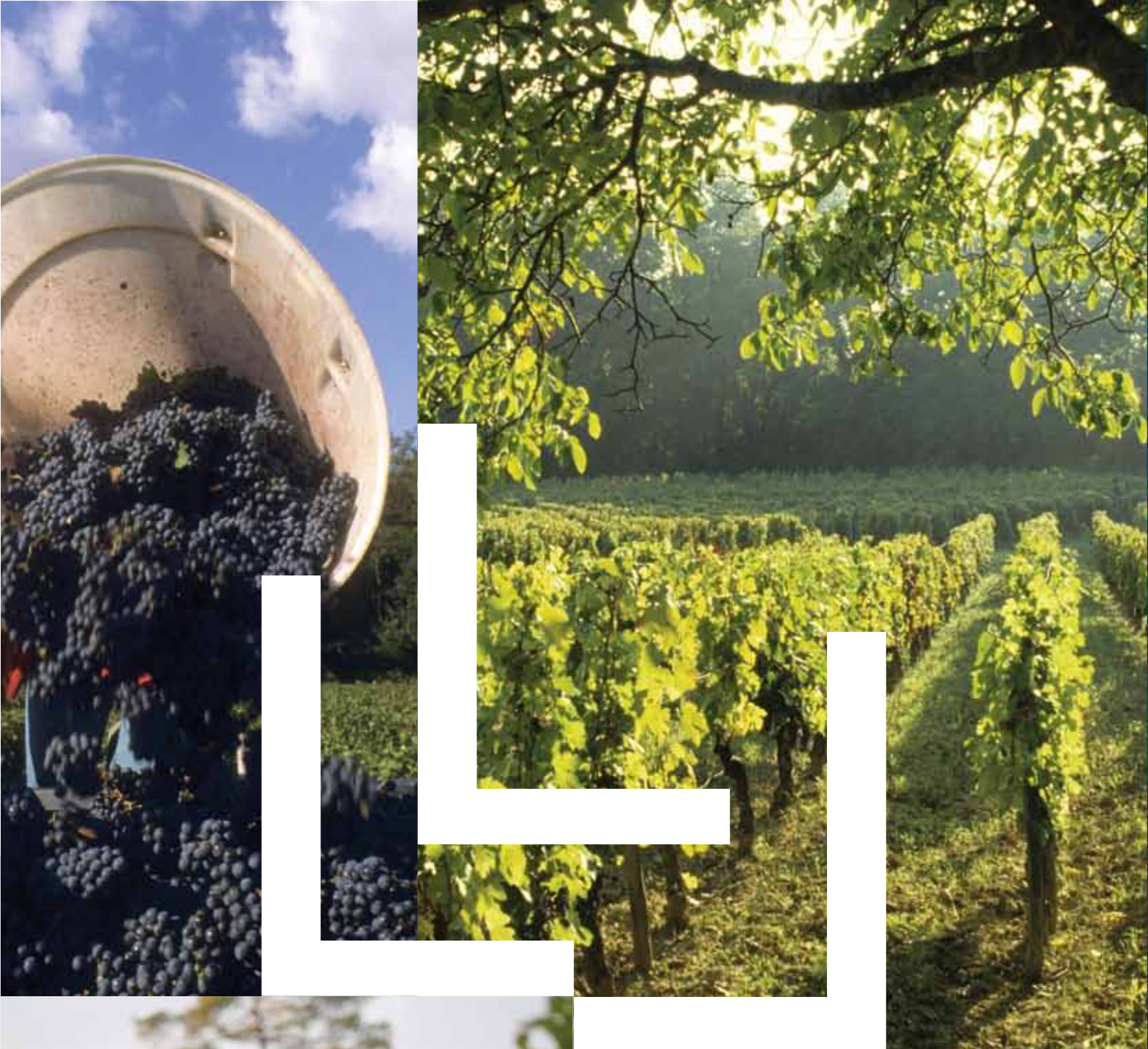
CHATEAU  
LASSALLE

GRAVES

*The elegance of a vineyard*



PRESS BOOK  
*Mr and Mrs Lalanne*



# GRAVES

*The elegance of a vineyard*

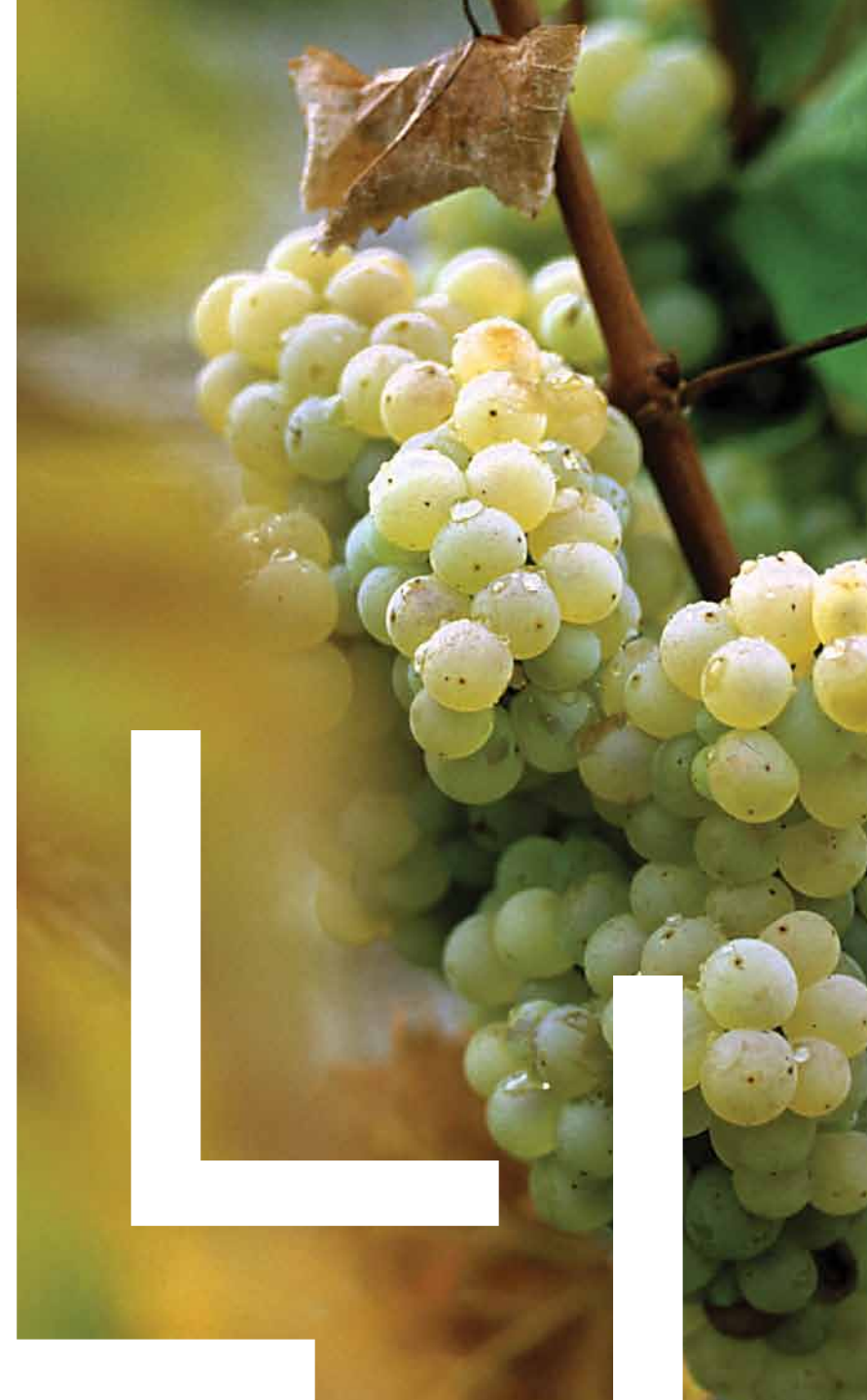






## TABLE OF CONTENTS

- 6 History  
*of Château Lassalle*
- 7 Philosophy  
*of the Labbé Lalanne family*
- 8 The château  
*in figures*



- 10 Our wines
- 16 Château Lassalle  
publications



## History *of château Lassalle*

This property belonging to the Labbé-Lalanne family has evolved and grown from generation to generation.

In 2005, Fabien Lalanne took over with passion and ensures that the production of wines reveals the essence of this terroir. In 2009 his wife Perrine, with previous experience in a 1<sup>st</sup> Grand Cru Sauternais, joined to assist with marketing their wines.



This estate is located between La Brède and Saint-Selve on a gravelly hillside.

The area of the vineyard is 16 hectares, 9 in red and 7 in white. The plateau consists of exceptional Graves which makes it possible to obtain an optimal maturity of the reds. The clay-limestone slopes develop the aromatic freshness and the mineralization necessary for the "grands blancs secs".

The vineyard is managed and organised according to the different soils and the five grape varieties of the chateau.

## The philosophy *of the Labbé-Lalanne family*

With 8 generations of our family, we have inherited the expertise as well as the knowledge of the land - the terroir.

Being a winemaker is not only a job but a passion that requires time and rigor. Always in search of purity, we seek to evolve our working

techniques so that our wines express the quality of this terroir. Committed to respecting our environment and the preservation of soil life, we have just obtained H.V.E (High Environmental Value) certification.

Being a family business passed from one generation to the next, our wines reflect the alliance between modernity and tradition.





## Château side

Soils and basements

**Graves**  
and clay-limestone

Area

**9 ha** of red  
**7 ha** of white

Density of plantation

**5,500** feet / ha

## Vineyard side

Average age of the vineyard

Red: **20 years**  
White: **30 years**



Grape varieties

Red  
**60%** Merlot  
**40%** Cabernet Sauvignon

White  
**60%** Sémillon  
**25%** Sauvignon  
**15%** Muscadelle

## Wine side



Automatic temperature  
control

Duration of vatting

**20 to 25** days

Ageing

Red: **12 months**  
(1/3 new barrels)  
Whites: **9 month**  
(stirring on lees for sauvignons)

Average production

Red: **60,000** Bottles  
White: **50,000** Bottles

## Trade

Sales

**France: 40%**  
20% Individuals, 20% C.H.R.

**Export: 60%**  
Countries: Belgium, Netherlands, Germany,  
Luxembourg, China, Australia



Brand attached  
to the property

**Castle Haut-Gagnan**  
Graves



# Château Lassalle

*Red*



## Blend

60% Cabernet Sauvignon  
40% Merlot



## Ageing

12 months in oak barrels (30% new)



## Yield

45 hectoliters/hectare



## Tasting

This wine has a deep ruby red colour with very developed aromas of black fruits, mixed with notes of roasting. Generous at first, the wine has elegant tannins and a long spicy finish.



## Wine & food pairing

Red meats, game, cheese ...

# L'Esprit de Lassalle

*Red*



Gold medal  
2017 Macon French Wine  
Competition



## Blend

60% Merlot  
40% Cabernet Sauvignon



## Ageing

8 months in stainless steel tanks



## Yield

55 hectoliters/hectare



## Tasting

The robe of the wine is deep red. The aromas express notes of black fruits, mixed with hints of spices. The palate is supple with silky tannins



## Wine & food pairing

White meats, poultry, cheeses ...

# Château Lassalle

## White



Silver medal  
Winemakers competition  
independent 2017



### Blend

50% Sémillon  
50% Sauvignon



### Ageing

8 months in oak barrels



### Yield

45 hectoliters/hectare



### Tasting

The color is pale yellow. The intense aromas are of mango mixed with floral notes. It is a really fine wine which combines an impressive balance between fat and acidity.



### Wine & food pairing

Seafood, Fish in Sauce, Holy Shell Jacques, cheeses...

# Esprit de Lassalle

## White



### Blend

50% Sémillon  
40% Sauvignon  
10% Muscadelle



### Ageing

8 months in stainless steel tanks



### Yield

55 hectoliters/hectare



### Tasting

This pale yellow wine has aromas of citrus and flowers. The mouth remains balanced with a touch of acidity in finish allowing it to keep a nice freshness.



### Wine & food pairing

Seafood, fish...

# The Rosé de Lassalle

Red



## Blend

100% Cabernet Sauvignon



## Ageing

Harvest picked at low temperature is extracted by direct pressing. A severe clarification is done before creating the alcoholic fermentation in the tank at a temperature of 18 degrees. The two months aging is done on fine lees before bottling.



## Tasting

This pink pale coloured wine has hints of crushed strawberries and English candies. The mouth is ample with a tart finish.



## Wine & food pairing

Fish dish, grilled meat and amuse-stuffy...

# Quintessence of Lassalle

Red



## Blend

100% Cabernet Sauvignon



## Ageing

12 months in oak casks (100% new)



## Yield

45 hectoliters/hectare



## Tasting

A wine with aromas of cherry, fruit jelly. A long and ample character in the mouth marked by the wood but nicely extracted. Cellaring potential 15 years.



## Wine & food pairing

Red meats, game, cheese ...



# Hachette Wine Guide

Château Lassalle Red



# BETTANE AND DESSEAUVÉ

Château Lassalle White

15/20



«Wine with a strong character. An open and concentrated nose on the ripe fruit. Generous, concentrated and tannic, a beautiful Graves of long-keeping.»



«Nice balance between Sauvignon blanc and Semillon. A nose with aromas of citrus and white flowers. A lot of freshness and liveliness in the mouth.»

# The Wine Review of France

Quintessence

17/20

# The point

Château Lassalle Red

15/20



«An ambitious wine with a fairly strong tannin texture, a tight style, lots of charm and a nice harmony on the palate.»



«Black fruit notes that opens with aeration. A smooth, round mouth well structured with silky tannins.»

## L'Express - Spécial wines 2015

*Château Lassalle White*



*«Its freshness, its tonicity and lingering fruity aromas will appeal to as many people as possible.»*

## The Point - Spécial wines

*Château Lassalle Red*

15/20



*«Nose black fruits, cocoa, soft mouth, greedy, pretty fruit, ripe, good length and freshness»*

## The Wine Review of France

*Quintessence*

16,5/20



*«A full-bodied wine with a tannin structure of beautiful origin and nicely extracted. A long and ample character. Style, with a beautiful vinification»*

## Decanter (International press)

*Château Lassalle Red and White*

Decanter

87/100

Château Lassalle  
Red - 2015

88/100

Château Lassalle  
White - 2015





GRAVES  
*The elegance of a vineyard*



# CHATEAU LASSALLE



SCEA LABBÉ LALANNE  
Propriétaire à LABRÈDE  
33650  
FRANCE

Phone: 05 56 78 49 65  
Email: [contact@chateaulassalle.com](mailto:contact@chateaulassalle.com)



[www.chateaulassalle.com](http://www.chateaulassalle.com)



Follow us  
on facebook !